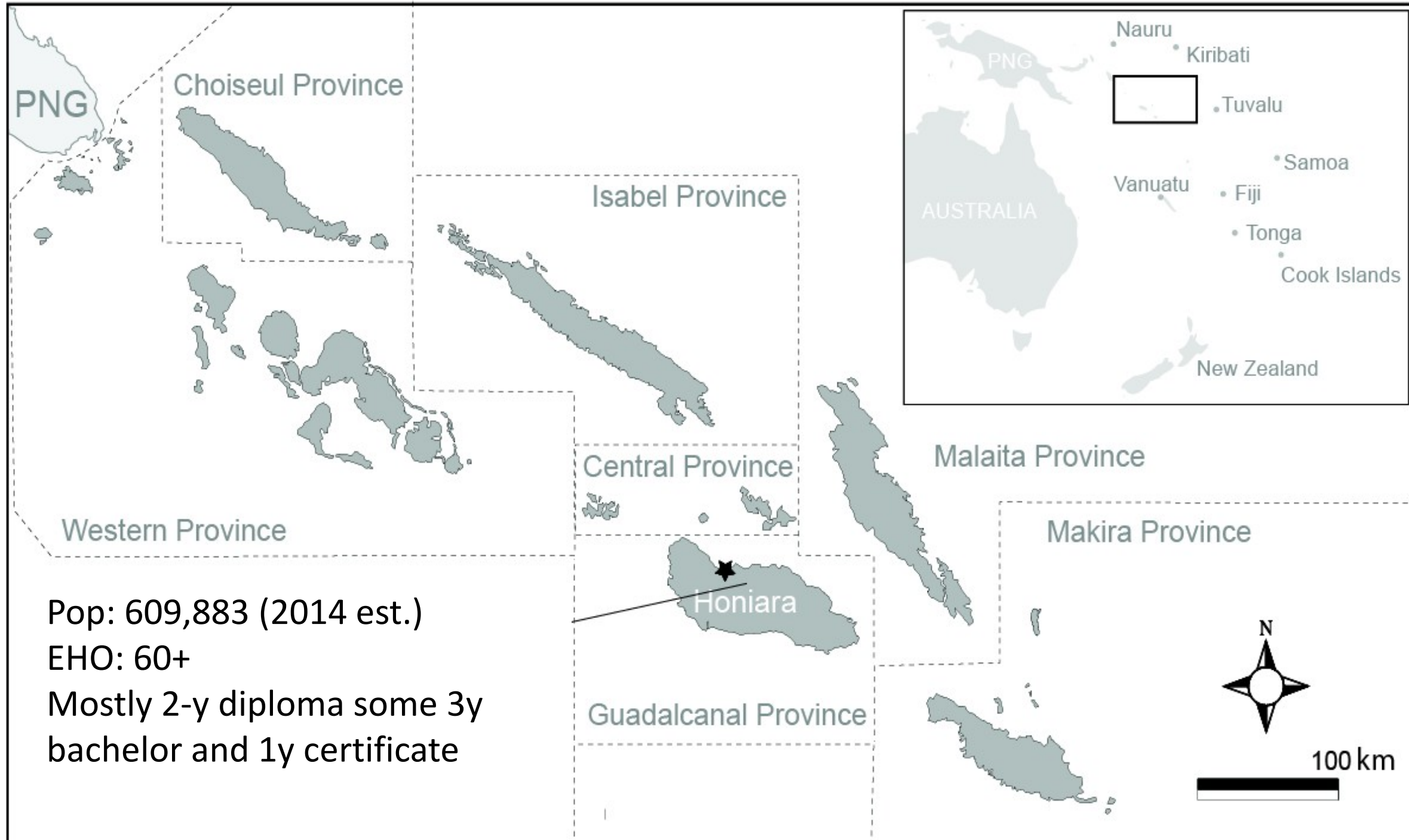


Environmental Health Indicators for small Pacific Island Countries: The case of Solomon Islands

Paul Jagals

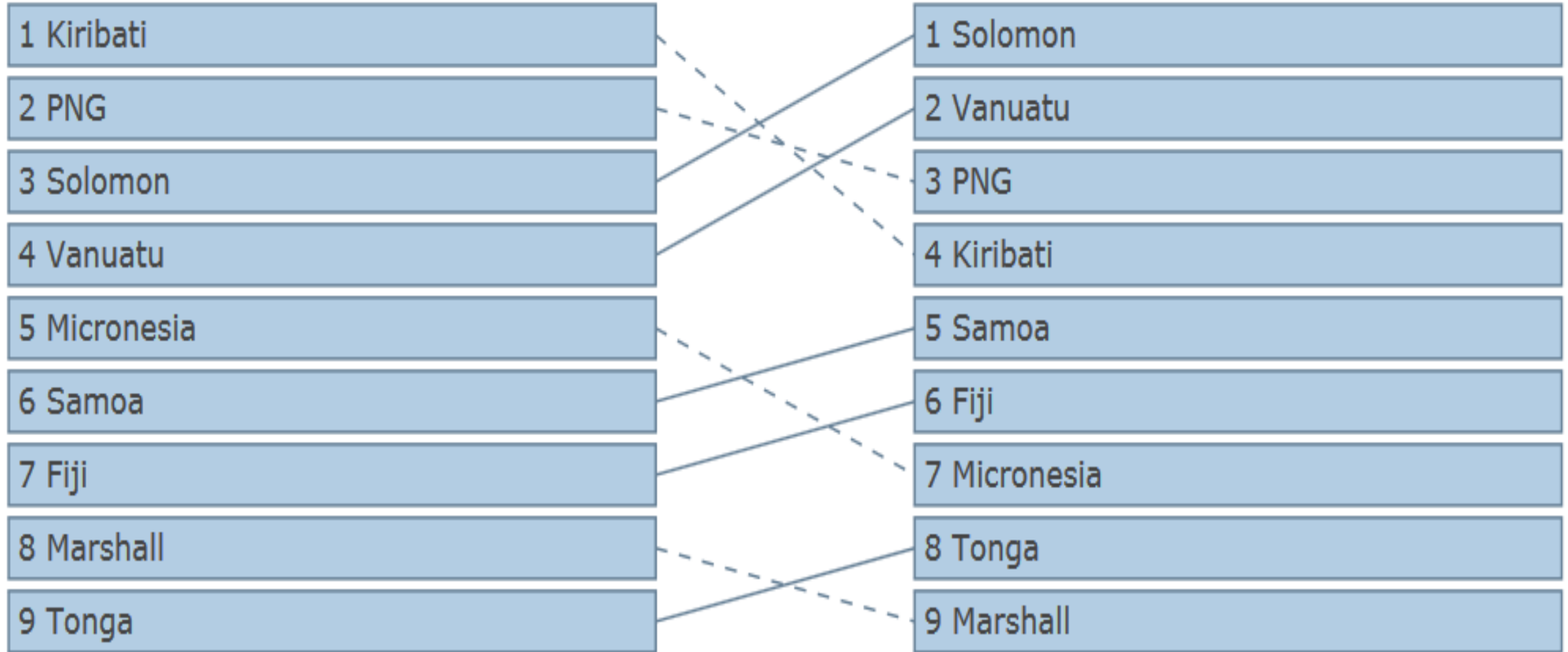




All causes attributable to Environmental/occupational risks
Both sexes, All ages, Percent of total DALYs

1990 rank

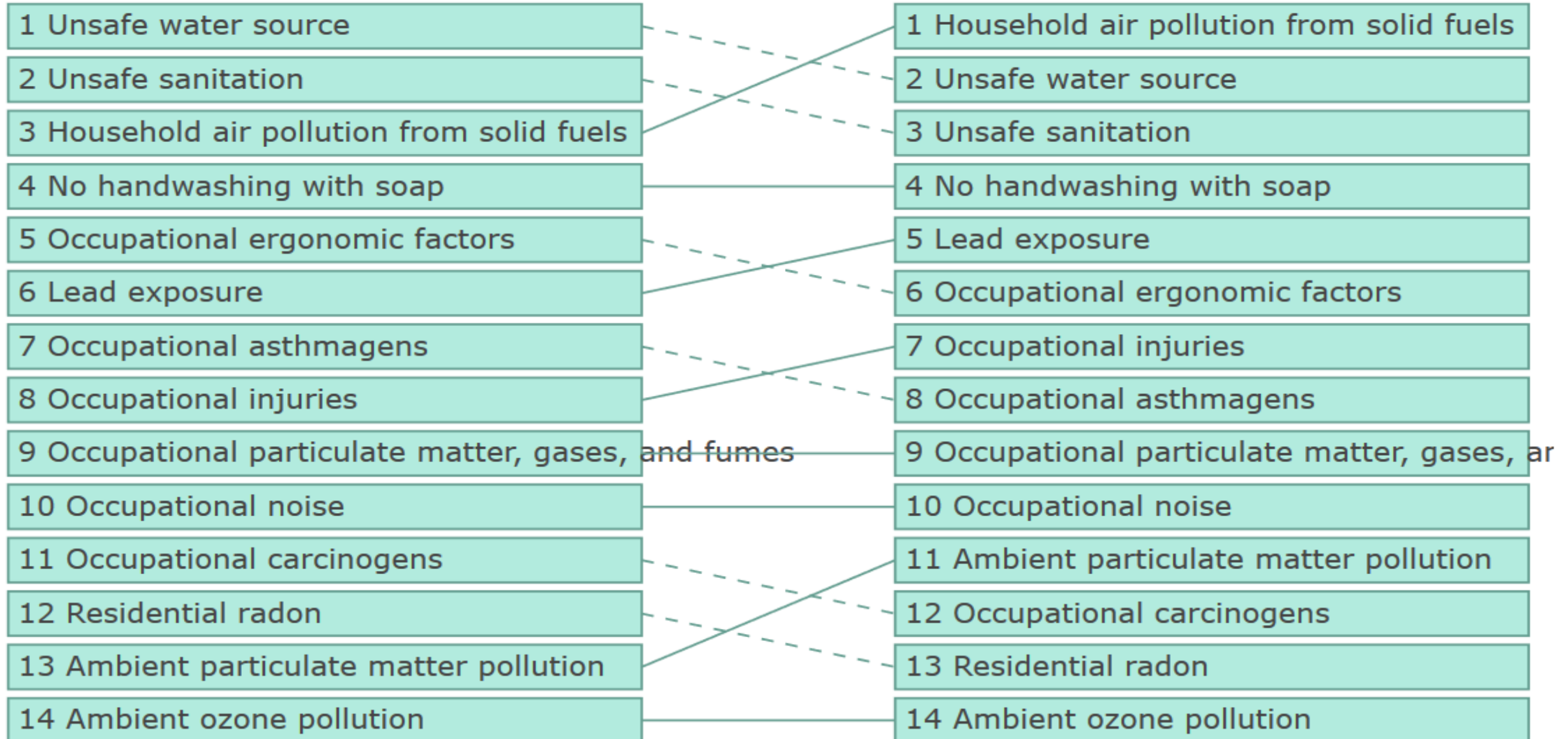
2013 rank



Solomon Islands
Both sexes, All ages, DALYs per 100,000

1990 rank

2013 rank

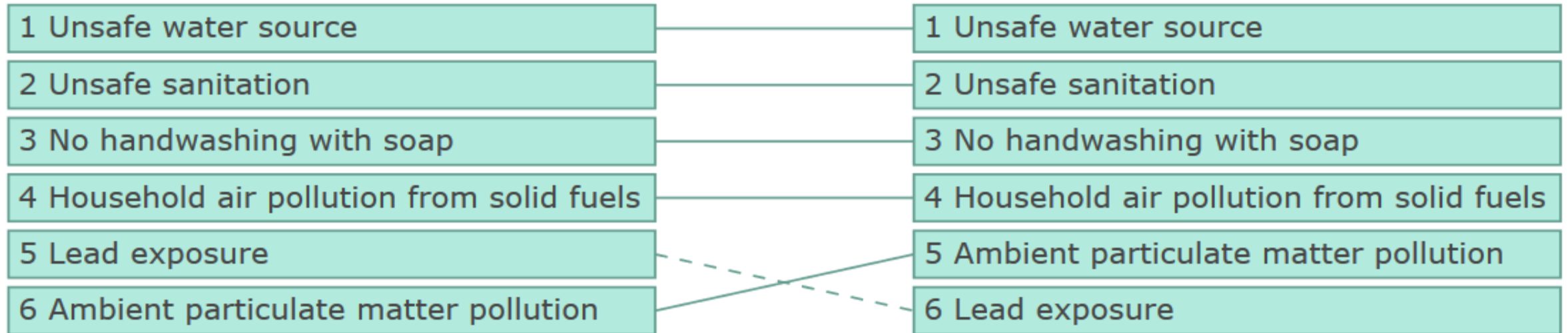


Solomon Islands

Both sexes, Under 5 years, DALYs per 100,000

1990 rank

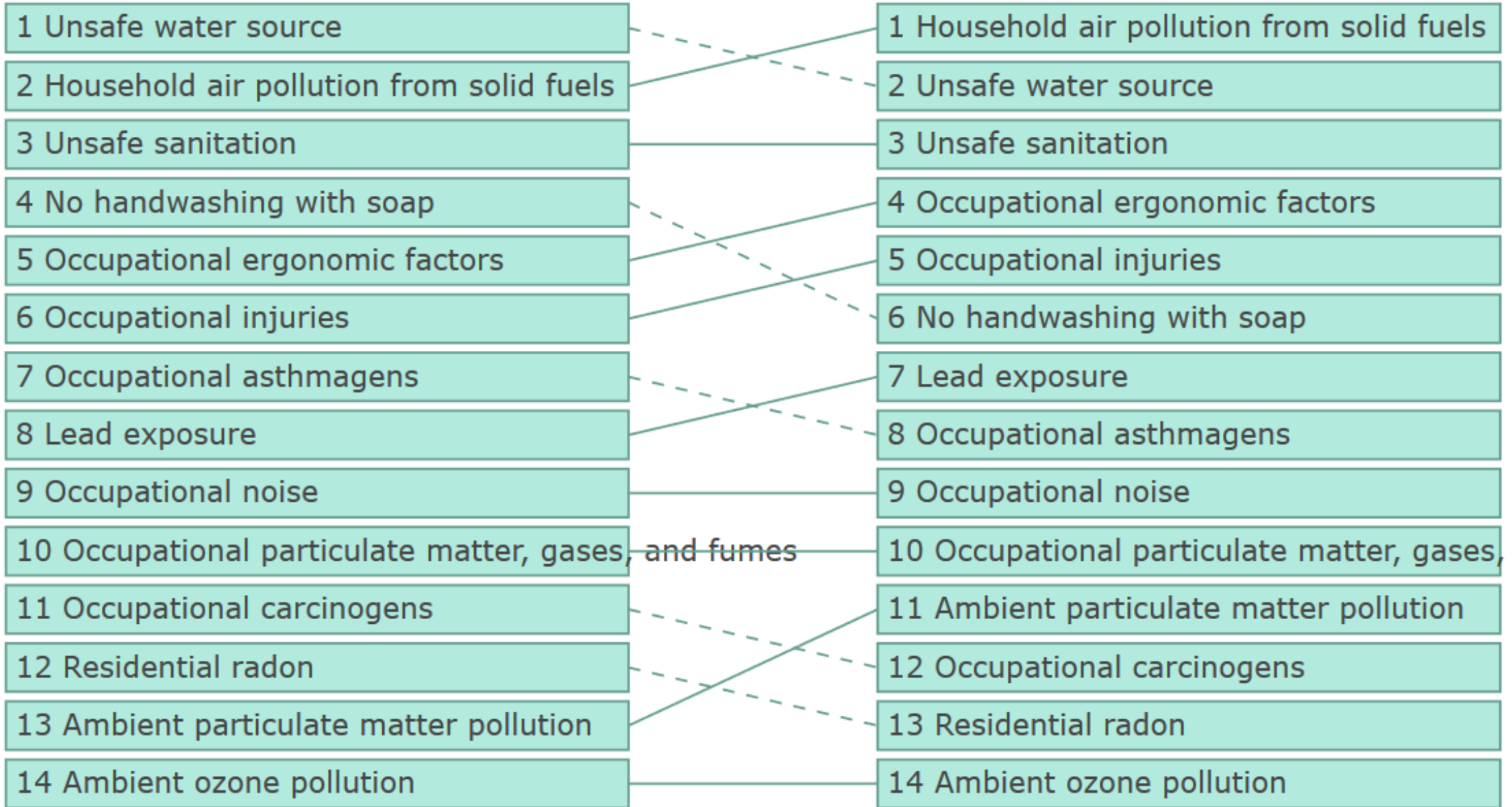
2013 rank



Solomon Islands
Both sexes, 15-49 years, DALYs per 100,000

1990 rank

2013 rank



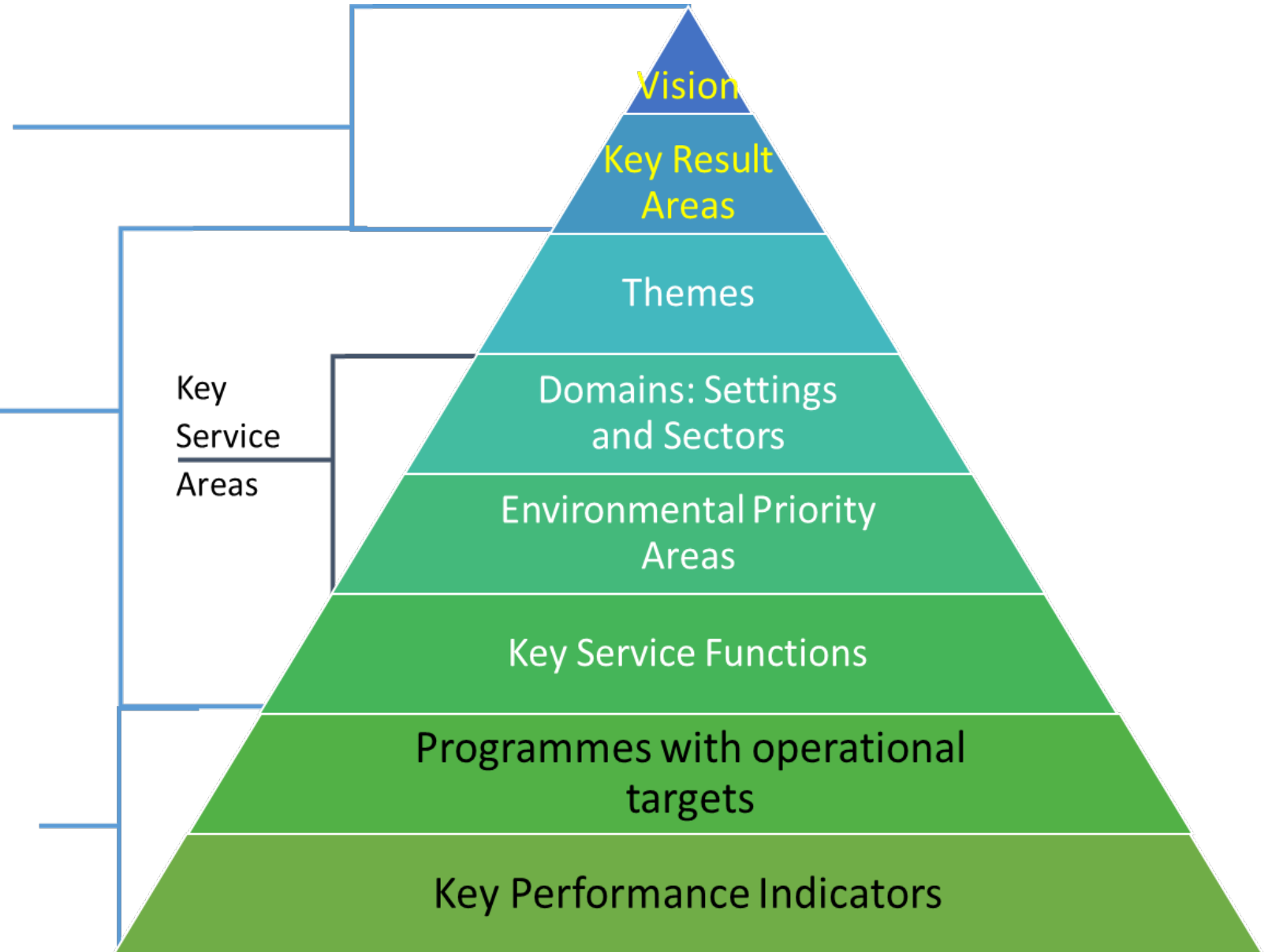
To deliver an Environmental Health Service

Structuring EHS for Small Pacific Island Countries

The Policy Agenda

The Strategy

Cooperate Planning



The Key Service Areas for Environmental Health in Solomon Islands

Environmental Priority Areas		
The Settings		
Environments and conditions	Settlements	Climate and disaster mitigation and adaptation
	Safe housing	Borders and Human Quarantine
	Public Infrastructure	Animal and Vector Control
	Health Care Facilities	Nuisance Noise and Light
	Public Spaces	Health and Safety in Occupational settings
	Building Materials	Domestic Hygiene
The Sectors		
Water	Access and Availability of Potable Water	Marine & Aquatic Ecosystems
	Source Water Protection	Water Infrastructure
Food	Food Safety and Quality	Biosecurity and Pest Control
	Food Imports and Exports	Food Security and Nutrition
Energy and Transport	Air Quality	Energy Production and Infrastructure
	Industrial Emissions	Transportation Infrastructure and Safety
	Radiation	Fuel Storage
Goods	Natural Resource Development	Cosmetics and Detergents
	Product and Chemical Safety	Hazardous Goods
	Pharmaceuticals	Children's Toys
Waste	Solid Waste and Sanitation and Liquid Waste	Hazardous and Industrial Waste
	Medical and Health Care Waste	Electronic Waste (E-Waste)

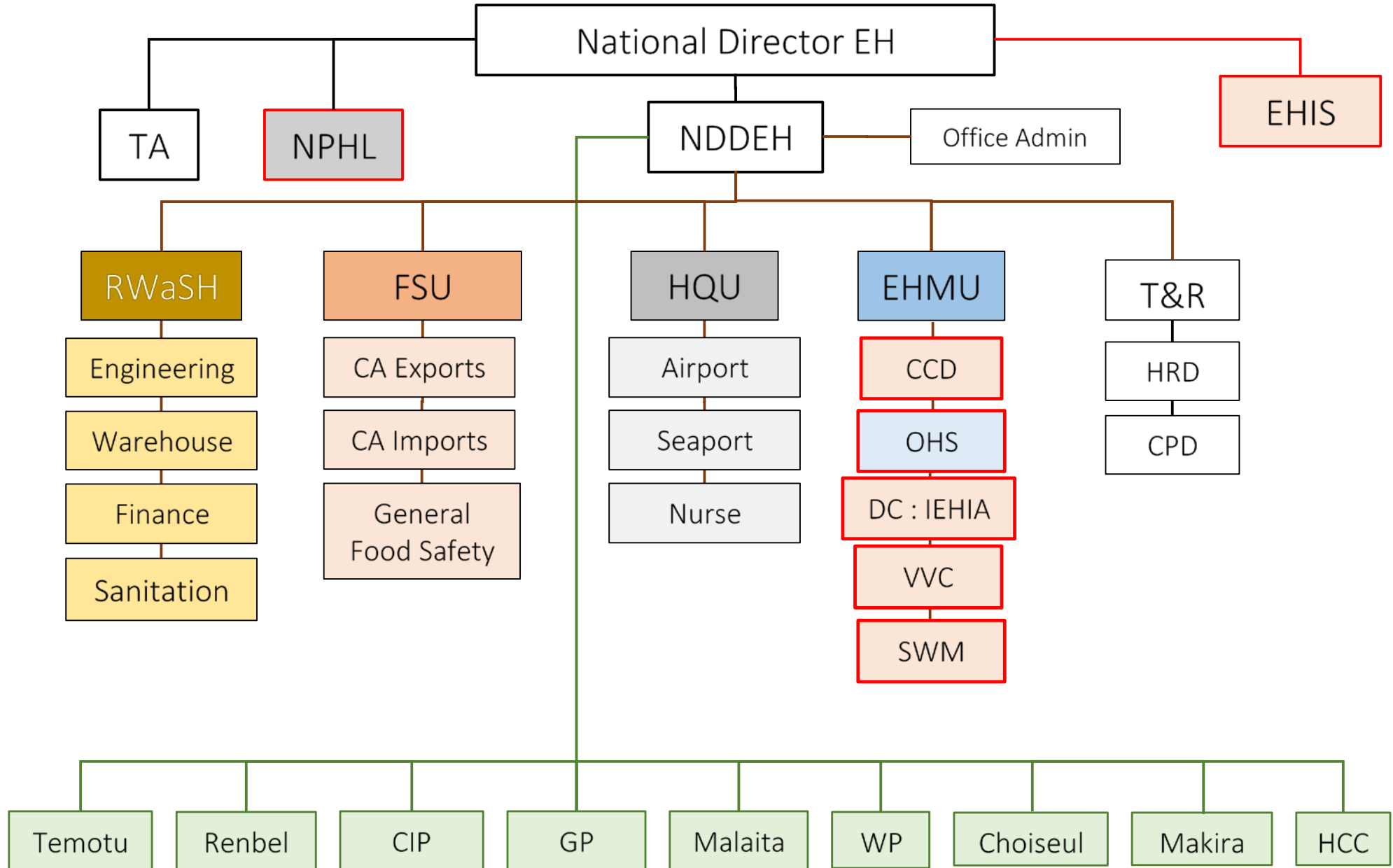
Environmental Health Program priorities: 2016 - 2020

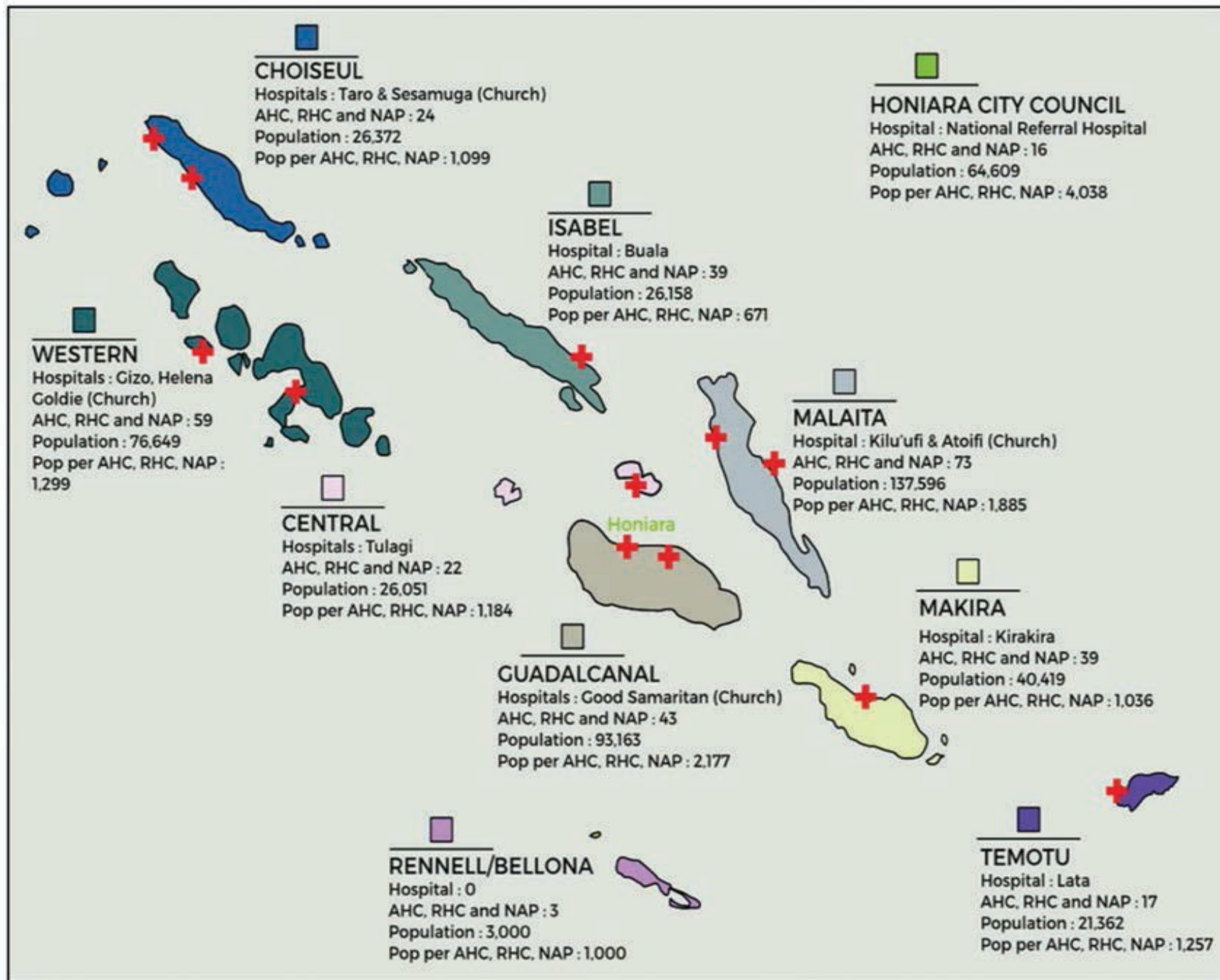
Programs	Bottleneck	Timeline to outcome	Progress indicator
Current			
RWASH	Budget, staffing	Current	<ul style="list-style-type: none"> Nr of Rural Communities with improved drinking water supplies Nr of Rural Communities Open Defecation Free (ODF) Nr of Rural People hand-washing with soap at critical times
Food safety	Budget, staffing	Current	<ul style="list-style-type: none"> Under development
Port Health Quarantine	Budget, staffing	Current	<ul style="list-style-type: none"> Under development
Current but requiring strengthening			
EnHealth Management: <ul style="list-style-type: none"> Climate change / disaster response Vector and vermin control Occupational Health and Safety 	Staffing, budget, partnerships	2017 2018 2020	<ul style="list-style-type: none"> Inter-sectoral collaboration identified and roles formalised Sub-program policies developed New programme planning completed for 2021-2025 strategic cycle
New programs to be developed			
Solid Waste management including urban sanitation	Staffing, budget partnerships	2018	<ul style="list-style-type: none"> Current separate projects drawn into Program For sanitation similar indicators as RWaSH Indicators for safe waste storage and collection Indicators for safe waste disposal
Development control – Settlements, Mining, Logging, Tourism etc	Staffing, budget partnerships,	2018 2019	<ul style="list-style-type: none"> IEHIA process introduced to other sectors Joint Advisory committee established New IEHIA process piloted for 2021-2025 strategic cycle implementation
Targeted pollution prevention (Water, Air, Soil, Marine Ecosystems)	Staffing, budget, partnerships	2019	<ul style="list-style-type: none"> New programme planning completed for 2021-2025 strategic cycle

Strengthening the Key Service Functions of the EHD: 2016 - 2020

Key Service Function	Bottleneck	Timeline	Progress indicator
Priority new Programme			
Environmental Health Information System	Developer, staffing, budget, technology	2017 2018 2019	<ul style="list-style-type: none"> • Proto RWash system in test • Proto full EHIS system in test • New programme planning for 2021-2025 strategic cycle
Current program to be strengthened			
Public Health Laboratory Services	Operational budget	2017 2018	<ul style="list-style-type: none"> • Quality assurance System • Integrated in EHD programmes and EHIS
EH Workforce	Budget, staffing, time	2016 2017	<ul style="list-style-type: none"> • EH 2-y Diploma design • EHD implemented at SINU • SIG sponsorships <ul style="list-style-type: none"> ○ Numbers of Current Cert EHP to complete Dip @SINU; ○ Numbers of Current Dip EHP to complete BEH (@FNU); ○ Numbers of Vocational upskilling including relearning of competencies.
Public access to EH services	Budget, staffing; infrastructure, equipment	2019	<ul style="list-style-type: none"> • Increased EHP nrs in Provinces • Increased infrastructure in Provinces • Increased EHS visibility across all programs in Provinces
Partnerships	Budget, staffing	2017	<ul style="list-style-type: none"> • All internal and external partners identified and engaged
Polices, legislation / guidance	Reviewer, budget, staffing	2018 2020	<ul style="list-style-type: none"> • All documents reviewed, gaps identified • Green papers and drafts in process
Research	Operational budget	2018	<ul style="list-style-type: none"> • Number of projects involved with

National Environmental Health Division





Environmental Health Examples of National Health Reporting

Outcome Statement	Objectives	Lead Department/ Division*	Relevant Documents	Indicators
Improved child survival particularly for disadvantaged, remote, hard to reach	Number of communities with safe drinking water and sanitation	Lead: Environmental Health Provinces	WASH strategy	Number of ODF Communities
Reduce environmental health hazards	Develop environmental hazard exposure policy	Lead: Environmental health	Environmental health corporate plan	Policy developed Act developed
Reduced burden of communicable diseases	Reduce number and intensity of food and waterborne outbreaks	Lead: Environmental health		Reduction of diarrhoeal presentation

The challenge of Environmental Health SDG Reporting for Small PIC



Sena et al, 2016



Pruss-Ustun et al, 2016

Thank you